



BEECHEN CLIFF

16th June 2022

Message from the Headteacher

Dear Parents and Carers,

We are currently enjoying the sunny weather and are expecting a particularly hot day tomorrow.

Pupils are not required to wear blazers and ties tomorrow, though all other uniform requirements remain the same. We will return to normal uniform expectations on Monday when we expect the temperature to be cooler again.

We are now moving towards the end of the examination period, though GCSE and A Level exams continue for another week and Year 10 pupils have their summer assessment week next week.

May I take the opportunity to ask you to check your child has the correct equipment to bring to school. Tutors are carrying out regular checks and there has been an increase in the number of pupils without a ruler, calculator or other basic equipment. It is important that pupils are ready to learn and so thank you for your support with this.

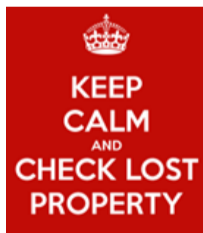
T. D. Markall

Tim Markall
Headteacher

Lost Property

If your son has lost an item of uniform or sports kit, please encourage him to visit the school nurse during a break or lunch time to see if the item is there.

Please also ensure that all items brought into School are clearly named.



Calendar

Friday 17th June

Year 8 – Tir-y-cwm Adventurous Activity
Year 12 Gold Duke of Edinburgh Expedition (3days)

Saturday 18th June

Year 6 CATS tests

Monday 20th June

Year 10 Summer Assessment Week

Thursday 23rd June

Three Peaks Information Meeting 6.30 in Refectory

26th June – 1st July

Year 10 and 12 France trip (with Hayesfield)

Monday 27th June

New Parents Evening – 6pm

Tuesday 28th June

Centurion Challenge Meeting 6.30 in Refectory

30th June – 2nd July

South Devon Cricket Tour

Friday 1st July – Monday 4th July

Three Peaks challenge 2022

2nd July – 6th July

Year 8 Rhineland Trip

Friday 8th July

Year 8 Wimbledon Trip

Friday 8th July – Sunday 10th July

Centurion Challenge 2022

Saturday 10th – Thursday 14th July

KS3 9 (Year 8) Spain Trip

Tuesday 12th July

Year 12 Hinkley Point power Station

Friday July 15th

Sports Day

w/c Monday 18th July

Activities week

Year 10 and Lower Sixth Work Experience

Key Notices

Literacy and Boys Event with Gary Wilson

Wednesday 6th July, 18:30-20:00 in the main hall

Parents and carers of pupils in Years 7-8 are invited to join Mrs Blair, SENDCo on Wednesday 6th July to hear guest speaker, Gary Wilson give his views on the reasons why some boys underachieve. At the session Gary will also give strategies for supporting literacy at home.

Gary Wilson is one of the country's leading experts on raising boys' achievement. He is a freelance education consultant, speaker, trainer, author and former teacher of twenty-seven years. Gary has advised and delivered training in over a thousand schools and over thirty LAs across the UK. You can find out more about Gary's work on his website:

<https://www.garywilsonraisingboysachievement.com/home>

If you would like to attend, please register your interest using the link below:

<https://forms.gle/RvTfjAahFGSf8qjU7>

Kind regards,

Ms Joanna Blair
Special Educational Needs and Disabilities
Coordinator and Senior Leader for Pupil Premium

LIBRARY - Closed for public examinations

At Beechen Cliff we are committed to creating the very best possible environment for every student who is taking a public examination. It is always a challenge in a busy, large school to find sufficient, quiet rooms to support our most vulnerable students and those who have additional needs such as laptops, or scribes. Each year we repurpose our Library for the period of summer public exams as our Small Exam Centre.

A Reading Room will be provided before school, at break, lunch and after school instead in our Recital Room which can be found on the ground floor of the Music Block. All Reading lessons will move here for the duration and the Librarian will be on hand with a supply of books, regularly replenished and will take orders for boys who need a specific new book.

Thanks to all students, parents and staff for all your support as we strive to support every single candidate to fulfil their potential during public exams.

Kate Davison
Examinations Officer

REPORTING PUPIL ABSENCES

It is important that **all absences** from School including late arrivals and medical appointments be reported to School promptly. **Parents and carers please take note of the following correct contact details.**

Lower School Pupils

To report a Lower School absence please call the School direct on **01225 480466**, and select **Option 1** or you can email the lower school attendance at attendance@beechencliff.org.uk.

Sixth Form Students

For a Sixth Form student absence please call the School direct on **01225 480466** and select **Option 2** or you can email 6th Form attendance at sixthattendance@beechencliff.org.uk

Inter-school Spelling Bee

Following the heats held in school last month, where the standard of spelling was extremely high, we took a team of four students to Hayesfield School on Thursday 9th June for the inter-school spelling bee finals.

The team were Harry Daniels, Jacob James and Kohl Hardy, with Nathan Morris supporting the team in reserve and learning the ropes for next year!

Seven schools competed in the Roper theatre and by round three the atmosphere was tense for the 'spell-off' involving Kohl who showed impressive skill and nerve to achieve an amazing third place. Congratulations to all the boys involved who did Beechen Cliff proud!

Caroline Salmon
English

Menu for w/c 20th June

Monday: Beef Bourguignon, Sundried tomato and parmesan risotto (D)

Tuesday: Lemon and herb Chicken, Lentil aubergine courgette and feta hotpot (D)

Wednesday: Roast Beef, Sweetcorn fritters with sweet chilli mayo (W)

Thursday: Chicken with a tomato and mixed beans, Cauliflower and chickpea curry

Friday: Pasta Puttanesca (W), Falafel wrap with minted yogurt (W,D)

(D) = Contains Dairy products

(W) = Contains Wheat products

Can I please remind everyone to keep your accounts topped up at all times. If there is no money on your account you will not be permitted to buy anything from the refectory or 6th form study.

Dan Keal
Chef

School Contacts

Contact details for senior members of staff are available on the contact page of the school website.

[Contacts Link](#)

If you wish to get in touch or have a concern please contact the relevant member of staff or your son's tutor. Alternatively please email headteacher@beechencliff.org.uk and the message will be passed on to the appropriate person to respond.

Extra Curricular

TRIPS - FORMS! - URGENT!

If you have signed your son up for forthcoming trips, please complete the personal details (emergency contact details, medical, allergies etc) for him on the google link that is on the original letter that you would have received for the trip via Parent-mail. There are several of these details missing for the trips this term. If we do not have the details submitted, your son will not be able to attend the trip.

Bath Hub Arts Festival



Baking Competition

BAKING COMPETITION!
FOR STUDENTS AND STAFF



THE GREAT BEECHEN BAKE OFF

-  YOUR FAVOURITE SUBJECT
-  YOUR FAVOURITE TEACHER/MEMBER OF STAFF
-  YOUR FAVOURITE MEMORY OF SCHOOL THIS YEAR

Can you Impress us with your baking skills?

Design and decorate your own Cake, Bread or Pastry to one of the following themes...



To enter, Email a photo of you holding your baked creation to
Cmoorhead@beechencliff.org.uk
By Monday 4th July 2022

SPORTS

Sports Extra Curricular Clubs

For information on after school clubs, please see the [Extra Curricular page on our website](#). This is up to date but please be aware that sometimes there are changes due to unforeseen circumstances. We will notify pupils via google classroom or via the Duty Boys in the event of any cancellation/ changes.

Sports Class on Google Classrooms/ Sports Fixtures website

Each year group now has a Sports Class on Google Classrooms where details of fixtures and notices will be given. Please encourage your son to check this regularly for information.

You can also find fixtures information and team sheets on our [Sports Fixtures website](#)

Team selection

With so many of our boys engaged and interested in the sports offering at Beechen Cliff, we endeavour to give them all a chance to be a part of the teams. This does mean that not all boys will be selected each week in the interests of being fair and giving a chance to all that wish to compete for the school.

Extra Curricular Sports kit

If your son is involved with our extra-curricular activities and therefore additional kit would be helpful, we do have an online shop with Kukri. This kit is not compulsory and does not replace your son's curriculum kit but is available for after school clubs and fixtures. Kit options include tracksuit bottoms, shorts, training t-shirts and additional mid layers. [Kukri- Beechen Cliff](#)

Pat Macdonald

Head of Shakespeare/PE

If your son is absent on the day of his fixture, please can we politely ask that when you contact Attendance to report the absence, you also advise the sports team sport@beechencliff.org.uk as soon as possible to enable an alternative player to be found.

Fixtures

Please find here the details of next week's fixtures, correct at the time of publication.

However please refer to the School Sports Fixtures at the [Sports Fixture website](#) for the most up to date information.

Day	Fixture	Start time/ kick off	Meet time	Transport	Finish/ Return time
Monday	U13a,b & c cricket v BGS (a)	14:00	12:30	MB x 3	17:45
Tuesday					
Wednesday	U14a&b cricket v Dauntseys (a)	14:30	13:00	MB x 2	18:00
	U12a&b cricket v Prior (a)	14:15	13:45	MB & 9S	17:30
Thursday	1st XI cricket v KES (a)	13:00	11:45	MB	18:00
	U13a,b & c cricket v KES	16:00	15:20	MB x 2 & 9S	18:45

Be Tick Aware

At this stage of the year through various outdoor activities many pupil and students will be in areas where they could pick up ticks. These minute spider like insects are a parasitic and take blood from their host.

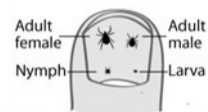
Ticks are normally easy to remove with tweezers and are quite common. However they can carry Lyme disease, which if untreated is extremely debilitating.

The incidence of this disease is more common in the warmer months so here is some advice on what to look for.

LYME DISEASE SYMPTOMS

If bitten by a tick carrying lyme bacteria you may get some/all of the following symptoms

Fatigue	Dizziness
Weakness	Confusion
Headache	Buzzing in Nerves
Backache	Paralysis
Joint Muscle Pain	Trouble with: speaking/Thinking
Stiff Sore Neck	Talking, Walking, Concentrating
Nausea/Diarrhoea	Trouble Breathing
Sore Throat	Mood Swings
Swollen Glands	Crying Spells
A Rash	



The rash is very distinctive and more commonly looks like a target/dart board. Please consult your doctor if you see this.

Further details are available by following the links on the Outdoor Education page of the school website or directly from this link (<http://lymediseaseaction.org.uk/about-ticks>)

Dave Brewer

Head of Humanities

TICK BITE FIRST AID

IF YOU FIND AN ATTACHED TICK...

1. Do NOT DELAY removing the tick.
2. Use a tick remover tool if possible. If not, use long fingernails.
3. Lift straight upwards, pulling firmly and steadily. Do not squeeze the tick's body.
4. Disinfect the bite area and wash your hands with soap.
5. If you don't manage to get the feeding parts out, the bite could go septic but this is not Lyme disease.

LYME RASH

LOOK OUT FOR THESE SYMPTOMS FROM 3 DAYS TO 3 MONTHS AFTER THE BITE. PEOPLE USUALLY GET SEVERAL SYMPTOMS BUT NOT ALL OF THEM.

LYME DISEASE

- IMMUNE SYSTEM**
 - Swollen glands
 - Fever/chills
 - Weakened immune defences
- HEART**
 - Irregular heartbeat
 - Inflammation
- MUSCLES**
 - Weakness
 - Pain
 - Stiffness
 - Fatigue
- RASH**
 - Flat, red rash
 - Not itchy or painful
 - May have a central clearing as it spreads
- BRAIN**
 - Memory loss, inability to concentrate
 - Headache, neck pain and stiffness
 - Encephalitis or meningitis
 - Psychosis
- EYES**
 - Blurred vision, floaters
 - Irregular pupil
- NERVES**
 - Pain, often from spine down an arm or leg
 - Pins and needles, tingling, burning, "electric shock" sensations, numbness
 - Paralysis, often one side of face
 - Twitching and spasms
- JOINTS**
 - Joint pain
 - Inflammatory arthritis in one or several joints

Food and Nutrition Donations

Beechen Cliff food and nutrition department is asking for any spare tupperware, plastic takeaway boxes and chocolate/sweets plastic boxes. So, if you do have any surplus containers in your kitchen cupboards, we'd be most grateful to receive them



If you have any, please get your soon bring them to the D&T department and ask for Cathryn.

BEECHEN CLIFF YOUNG MUSICIAN 2022

CALLING anyone who enjoys playing an instrument!

You are invited to take part in

Beechen Cliff Young Musician of the Year the final of which will be held towards the end of term 6:

- no matter what level - a grade is NOT required
- no matter if you have instrumental lessons or not
- no matter whether you have learned from a teacher, a friend, a Grandparent or from the internet.

It is all about enjoying playing!

It could be a piece that you have made up yourself, a grade piece, it could be the piece you are studying at present OR it could simply be something that you enjoy playing. The thing is that ANYTHING is acceptable so long as it is you playing.

If you wish to enter please email music@beechencliff.org.uk with your name, tutor group, name and composer of your piece and your instrument.

The deadline for entries is Friday 10th June at 4.00pm.

First round auditions will take place from Monday June 13th.

Go on have a go!! You will not be performing live and have nothing to lose!



Beechen Cliff Staff Vacancies



BEECHEN CLIFF

Administrator - <https://www.tes.com/jobs/vacancy/administrator-bath-and-north-east-somerset-1661255>

Cover Supervisor - <https://www.tes.com/jobs/vacancy/cover-supervisor-bath-and-north-east-somerset-1659060>

Resilient Team Workshop



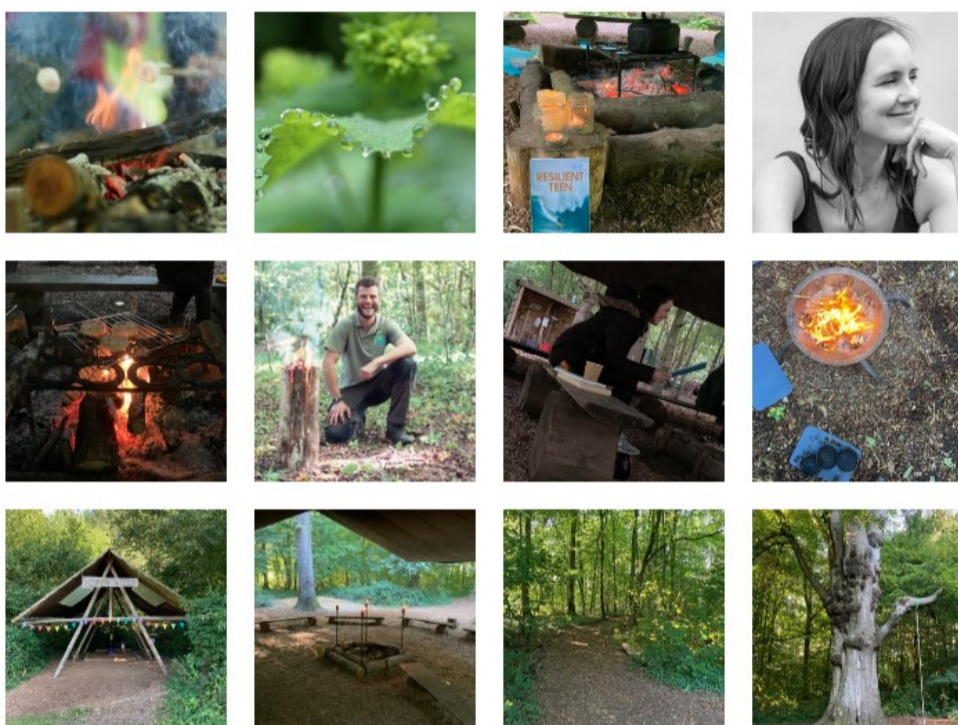
I am running another Resilient Teen workshop in the woods over the summer. This time it is a one-day workshop which may be of interest to some pupils.

Details are here at <https://www.bathmindfulness.co.uk/resilient-teen-in-the-woods>

Also I am now running my workshops in secondary schools within their woodland areas. There is something about the campfire effect to help people to open up.

Best Wishes

Nicola MacDonald
Mindfulness Coach

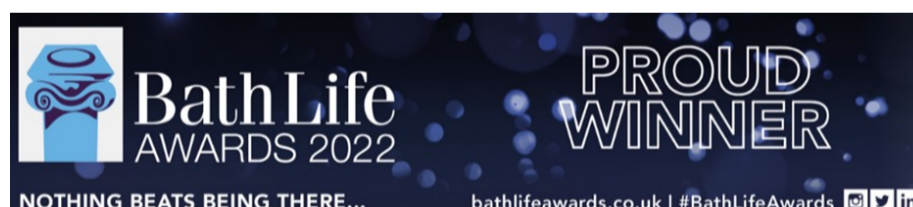


Adolescent Behaviour as Communication Event

Kev Long, head of Practice at Mentoring Plus, an award winning youth charity based in Bath is running an event on the 29th of June at Cassia, Bath Riverside - 6pm.

It will be informative, interactive and really useful for anyone that comes into contact with young adults. Key behaviours will be explained and what they mean, how the brain develops and how we can best support the teens in our lives. Tickets are just £3 pounds with proceeds to Mentoring Plus and lots of lovely drinks and refreshments on offer thanks to Cassia. To book a place, please follow this link <https://bit.ly/3zt9PPA>.

Becki Fox
Mentoring Plus Ltd **Community Engagement Officer**
01225 429694



Mental Health and Wellbeing

Self Talk - Putting your thoughts on a train...

What do you say to yourself that's useful?

A lot of young people talk to us about 'overthinking'

We as solution focused practitioners will ask them what their hopes are from our conversations?
And we ask them what will be different when their hopes are achieved?

We take a gentle preferred future approach where there is lots of space to talk about the problem; however we invite students to believe that change is possible.

We will also ask them what they do already that helps them even just a little bit to manage their overthinking?

What emerges from this is just wonderful. Young people will often describe the dialogue that they already have with themselves that supports them.

One young person told us that they put their thoughts on a visual train and send them on their way.

One person said they visualise squashing the thought between their fingers.

They will also describe what they do to manage it. Such as listening to music or exercising or being with friends.

What do you say to yourself that's useful?

What do you say that enables you to manage your inner thinking and what difference does it make to your interactions with those around you?



INVESTIN

Summer Careers Challenge

Free-of-charge, interactive content to help your students enhance their employability skills this summer

A promotional banner for the Summer Careers Challenge. The banner has a warm orange and red color scheme with sun icons. On the left, it says 'INVESTIN SUMMER CAREERS CHALLENGE' in large white and blue letters, with a Trustpilot logo and a 5-star rating. Below this, it says 'FREE CAREERS CONTENT FOR STUDENTS' in a dark blue box. Three bullet points with star icons list benefits: 'Gain valuable experience and build key skills', 'Boost your employability', and 'Complete the journal to win an Amazon voucher and AmbitionX membership'. On the right, there is a circular inset photo of a young woman in a blue dress looking at a laptop. Overlaid on the bottom right of the banner is a dark blue button that says 'CLICK HERE FREE JOURNAL DOWNLOAD' in white and yellow text.

We are delighted to share an inspirational piece of careers content to help your students improve their employability skills this summer. **Our Summer Careers Challenge encourages students to gain valuable experience and skills as they work through a series of tasks, reflecting on their progress at each stage.**

The school with the most submissions will receive a free-of-charge masterclass in a career of their choice. Students who send us their completed journal will be in with a chance of winning Amazon vouchers and free membership to our state-of-the-art careers platform, AmbitionX.

Please share this email with relevant students; a PDF can be found [here](#).

Summer Careers Challenge

We have been asked to let our school community know.....

Clean Path – Green Bath

Repair the canal path to encourage walking and reduce the number of cars in Bath

I am writing to ask for your support for a campaign to improve the canal towpath between Widcombe Deep Lock and Bathwick Hill.

As you are no doubt aware, this section of the Canal Tow Path is in a poor state, which makes walking and cycling difficult and even dangerous in wet weather, ice etc.

I am sure that your school travel plan encourages staff and pupils to walk and cycle, rather than come to school by car, so I am writing to ask for support in our campaign to have this stretch of the canal paved to make it accessible to everyone, year round.

*The Canal & River Trust [CRT] has the resurfacing of the Bathwick Hill to Widcombe stretch of the Tow Path in its business plan for the current year [2022-2023]. Some funding for the project has been made available by B&NES and the CRT. **However, more funding is required for the project to be started.** There are compelling reasons why it is so important to Bath!*

We are hoping that a strong swathe of support from local residents and especially schools, would encourage the council and the canal and river trust to find more funding to enable everyone to be able to enjoy the canal and all it has to offer. For schools, our children are the future, so walking or cycling this route will be a legacy they will remember forever. Not only does it encourage healthy, green living, but it means that they will continue to enjoy walking and cycling along a beautiful route, away from the fumes of the main road.

Please support us by asking parents and children to join the campaign by writing in to say why they love the canal and why they want the tow-path to be a better, cleaner, safer, green route to school, to work and for leisure.

Letters can be addressed to Paula Spiers: paula.spiers@bristol.gov.uk

Many thanks

David Quine [Canal Tow Path Support Group]



Sixth Form Prom



BEECHEN CLIFF
UPPER SIXTH
SIXTH FORM PROM
THURSDAY 30TH JUNE 2022
FROM 7PM-11PM
BATH HILTON

2 COURSE MEAL
AWARDS
BAR
DJ
£39

PTA News

SECOND HAND UNIFORM

The PTA would like all donations of good quality second hand school uniforms please.

We would like; blazers, shirts, ties, PE and games kits, cricket whites, foot wear, shin pads etc.

No trousers please!

By donating it back to school we can sell it on to raise much needed funds for the school. Please drop off your unwanted school uniform in to the blue plastic container by reception, at anytime. Thank you.

We are having a sale for the New Intake of Year 7's on **Monday 27th June**. If you have any small uniform items to donate please do so as soon as you can.

Thank you for your support....

Homestay Families Required



Hayesfield

GIRLS' | MIXED
SCHOOL | SIXTH

Homestay Families Required

Do you have a spare room?

We are looking for caring and welcoming families to host Norwegian Sixth Form students for the whole duration of the Autumn Term 2022 (including Half Term).

The male and female students are looking for individual accommodation in Bath, within walking distance or a short bus ride to our school, whilst they study here to experience British culture and improve their English.

We ask host to provide a home from home environment, daily home cooked meals, a bedroom with a study area and en-suite, if possible.

Generous living expenses allowance of £220 per week to provide for all their needs. Hosting to subject to a home visit and DBS checks.

If you would like to register your interest, please email international@hayesfield.com

ANNOUNCEMENT

Marina and Lesley, Co-Chairs of the PTA at Beechen Cliff, are standing down at the next AGM in November 2022. We encourage you as parents/carers to consider taking over this role and joining a team of other volunteer parents who are helping to run the school charity. It has been a fun 3 years for us and has been great to be involved with the many varied projects at the school.

Please express your interest in the post/posts to:

secondhanduniformbc@gmail.com.

It would be lovely to carry on these good works that go on at the school. Hopefully the PTA can be kept going and be carried forward.

Community Links



HOSTS REQUIRED IN BATH FOR JULY
*Receive **£185** per week hosting our international students*

**TO HOST STUDENTS AGED 12 - 17
IN SINGLE OR TWIN ROOMS**

HALF BOARD (WEEKDAY LUNCHES PROVIDED BY THE SCHOOL)

Please contact Sarah for more details
sarah.wringer@kaplan.com

Kaplan International Bath
5 Trim Street, Bath, BA1 1HB



**LUCRA
MORTGAGES**

Expert. Fee Free. Mortgage Advice.

We've teamed up with Beechen Cliff School to offer all those connected to the school, an expert, fee free mortgage service, taking away the hassle when getting a new mortgage. We will also pay £50 Cashback to Beechen Cliff for every person that takes a new mortgage out with Lucra Mortgages. You just need to quote 'Beechen Cliff.'

01225 970 830
hello@lucramortgages.co.uk
www.lucramortgages.co.uk

YOUR HOME MAY BE REPOSSESSED IF YOU DO NOT KEEP UP REPAYMENTS ON YOUR MORTGAGE



SAT 10TH SEPT 2022
MARSHFIELD CRICKET CLUB - SN14 8AB

BAND APPLICATIONS NOW OPEN
£300 OF MUSIC EQUIPMENT VOUCHERS
PLAY SET ON MAIN FESTIVAL STAGE

SUBMIT DEMOS BY FRIDAY 10 JUNE 2022
FINALISTS ANNOUNCED 01 JULY 2022
EMAIL BOB@MARSHFEST.CO.UK FOR APPLICATION

FIND OUT MORE:-
[HTTPS://MARSHFEST.CO.UK](https://MARSHFEST.CO.UK)
[HTTPS://FACEBOOK.COM/MARSHFEST](https://FACEBOOK.COM/MARSHFEST)

OPEN TO AGES 18 AND BELOW
ORIGINAL AND COVERS WELCOME
BANDS AND SOLO ACTS CAN APPLY

This video gives a good taster of our festival last year... <https://vimeo.com/608885143>.

This year we are running a battle of the bands competition for schools to give young musicians a chance to perform live at an outdoor event. We are welcoming entrants from across all the local schools and colleges. More details are located on our website, which has been partially opened to support the competition. www.marshfest.co.uk.

We are offering a £300 music equipment voucher to the winner, as well as a 30 min set on the main festival stage on Saturday 10th September.

Spotters Hockey

For the summer we are running two coaching activities - one in term time and camps in the holidays. Here are the details:

New Summer term Spotters Hockey Academy sessions - these started on **16 May** and will run from 6-730pm for 6 weeks be at the Royal High Senior School astro.

These sessions are designed to give young hockey players' more insight into their performance on the hockey pitch and how they can enhance their contribution to the team's performance through recognising the phases of the game and enacting strategies that will achieve better outcomes. We will work on individual skills and how to utilise these in the game and combine with the team to optimise their performance. We have also ensured that we are offering good value for money and a discount is provided for multiple session bookings, and our high quality coaching is offered at a price much lower than other providers!

Aimed at Years 6-8, (high performing Year 5's also welcome - and any Year 9's interested and we will put on an extra coaching group) these sessions will help to ensure that players benefit from this time in the off season and continue their progression, ready to impress when the season resumes in September. We will also run these pre-season in September, as we did last year and include the option to select additional athlete development and mentoring if this is of interest.

To book these please follow this link: <https://form.jotform.com/202084948864365>

We also have our **Spotters Hockey Summer Hockey Camps running on 25th and 26th July 2022, and 18th and 19th August 2022**, suitable for ages 7-15 and providing lots of fun hockey skills and game play, with specialised effective coaching provided by our qualified and experienced coaches, and booking can be made via this link for those: <https://form.jotform.com/210805551045346>

Many thanks indeed, do get back to me if any questions!

Kind Regards

Sally Potter

Spotters Hockey Academy Director
England Hockey Level 2 Coach
BSc(Hons)Sports Performance





Welcome (back) to Combe Down Rugby Club
Open to all Girls and Boys from school reception upwards

Tuesday's 7-8pm

Mixed girls and boys U10—U11

Boys U12's— U14s
Girls U13, U15s

Club House Open from 6.30

Sunday's 10 – 11am

Mixed Girls and boys minis (Aged 4 to 11 years);
Junior boys U12's— U 14's

Matches held Sunday mornings

Girls Matches—also on Sundays (normally pm)

Club House Open on Sundays for food and refreshments



Never played before—just come along to see if you like it before you join the club

Any Questions?
Call Mark 07799338405

Combe Down Rugby Club,
Bramble Way, North Road,
Combe Down, Bath
BA2 5DE



Enquiries:
Email: cdrfcjuniors@gmail.com
Tel: 077 99 33 8405