



BEECHEN CLIFF

Year 10 Parent Information Evening

7th October 2025

Aspiration • Compassion • Independence • Respect

Programme

- **Introduction:**

Mr Macdonald - Head of Year 10

- **PTA:**

Mrs Jane Gubbins - PTA Secretary

- **Attendance:**

Mr C Hall - Assistant Headteacher

- **Assessment and examination information:**

Mr A Seal - Deputy Headteacher

- **How to support your son through his GCSEs:**

Maths: Mr R Burnby - Head of Maths

English: Mrs S O'Higgins - Head of English

Science: Ms R. Bala - Head of Science

- **Careers information:**

Mr A Seal on behalf of Mrs E Pascoe, Head of Futures

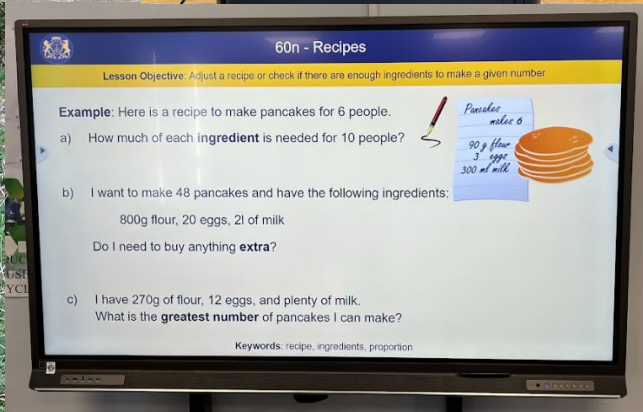
Aspiration • Compassion • Independence • Respect

PTA



Some examples of items the PTA have helped to fund:

- Clubhouse
- Interactive screens
- Library
- Beekeeping
- 3D printers
- Materials for extra curricular clubs



Aspiration • Compassion • Independence • Respect

Pastoral Care

- Tutor
 - Head of Year
 - Wider pastoral and safeguarding team
 - Solution Focused Counsellor, School Nurse, Mentoring
- Plus
- Every member of staff
 - Talk to us!

Aspiration • Compassion • Independence • Respect

External sources of support

- GPs
- CAMHS
- Kooth
- Online safety
- Safeguarding & Social Care

Aspiration • Compassion • Independence • Respect

Attendance

- Punctuality - Start at 8:25am
- What IS good attendance?



Aspiration • Compassion • Independence • Respect

WHAT DOES ATTENDANCE LOOK LIKE FOR YOU?

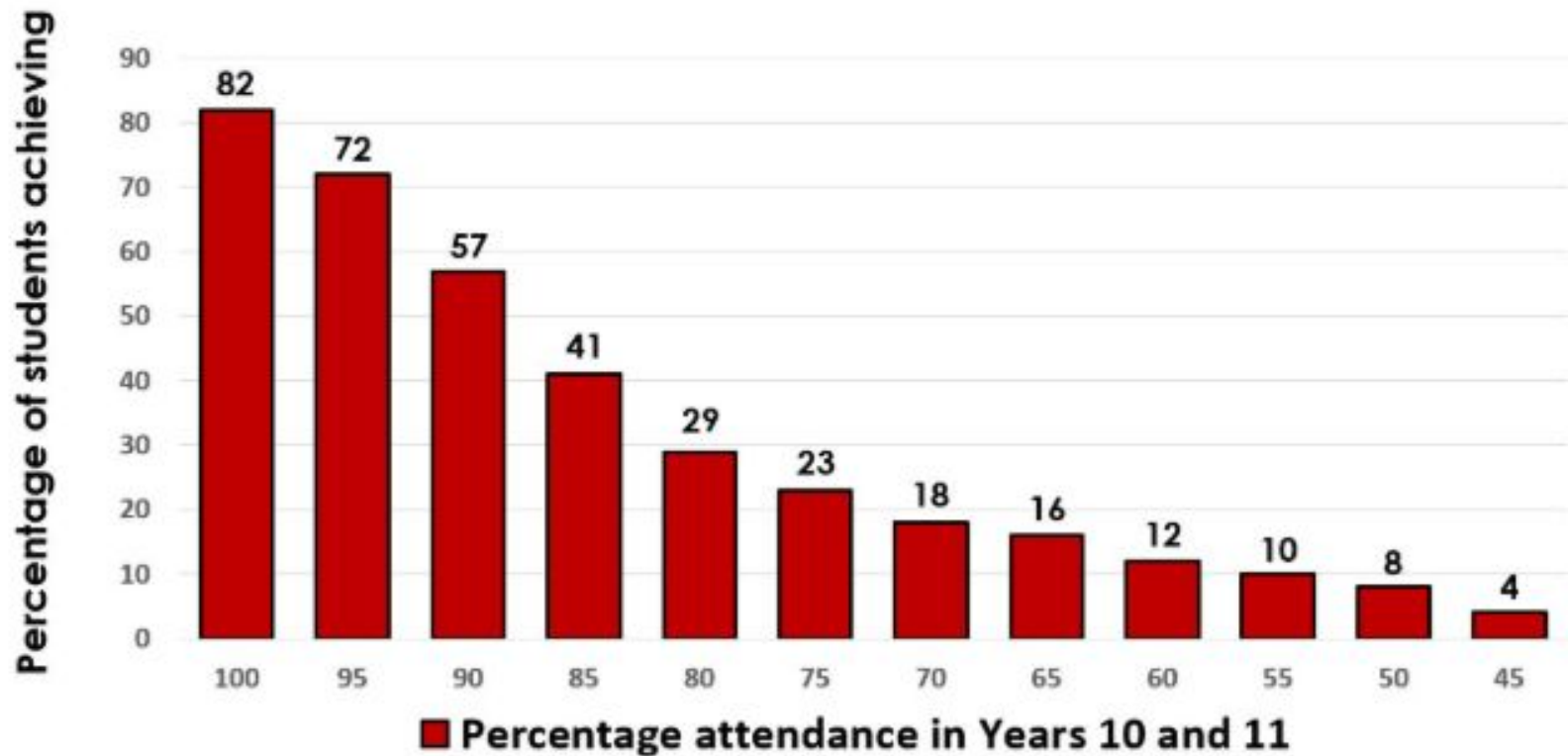
We expect outstanding attendance for all, however we do recognise that there are times when pupils will absent from school.

If attendance drops below 97% the school will contact parents immediately to put a plan in place to make improvements.

100%	Perfect – 0 days off school
99%	Excellent – 2 days off school
97%	Good – 5 days off school
95%	Slight concern – 10 days off school
90%	Very Concerned – 20 days off school
85%	Extremely concerned – 30 days off school

Aspiration • Compassion • Independence • Respect

Chances of 5+ GCSE 5-9 grades including English and Maths



Aspiration • Compassion • Independence • Respect

Attendance at KS4

**MOMENTS
MATTER,
ATTENDANCE
COUNTS.**

- Curriculum time pressures
- Knowing that you are on track and making progress (vs.)
- Pressure and potential anxiety issues
- Feeling a part of the school community
- Avoiding last-minute 'cramming'

Aspiration • Compassion • Independence • Respect

Top ways you to support your son's desire to attend school

1. Speak positively about the progression into a new Key Stage, their options, increasing maturity and greater opportunities. Encourage them to look forward to events in the school calendar.
2. Maintain good routines in the evening, including allocated time for homework, leisure activities, TV, etc. Screen time!
3. Display their timetable and help them to be prepared for school.
4. Celebrate their achievements. Check in with them and discuss how school is going regularly.
5. Be honest with the school about any absences & if you have serious concerns about their physical or mental health, consult with a medical professional.

Aspiration • Compassion • Independence • Respect

Assessment and examination information

Key Stage 4 Courses:

- GCSE subjects (Graded 9-1)
- Emphasis on terminal examinations, some coursework
- A few Level 1/Level 2 courses – various grading

Aspiration • Compassion • Independence • Respect

Grading at Key Stage 4

KS3 Grade	GCSE Grades	Level 1/2 Grades	Grade code	Equivalent to GCSE
M+	9	Level 2 Distinction*	D2*	8.5
M	8			
M-	7	Level 2 Distinction	D2	7
R+	6	Level 2 Merit	M2	5.5
R	5			
R-	4	Level 2 Pass	P2	4
E+	3	Level 1 Distinction	D1	3
E	2	Level 1 Merit	M1	2
E-	1	Level 1 Pass	P1	1
-	U	Ungraded	U	U

Aspiration • Compassion • Independence • Respect

Grading at Key Stage 4

	GCSE Grades	Level 1/2 Grades	Grade code	Equivalent to GCSE
4% nationally	9	Level 2 Distinction*	D2*	8.5
	8			
	7	Level 2 Distinction	D2	7
	6			
Strong pass	5	Level 2 Merit	M2	5.5
Standard pass	4	Level 2 Pass	P2	4
	3	Level 1 Distinction	D1	3
	2	Level 1 Merit	M1	2
	1	Level 1 Pass	P1	1
	U	Ungraded	U	U

Aspiration • Compassion • Independence • Respect

When assessments will take place

- Termly for all subjects except.
- End of Year 10 Exams – w/c 8th and 15th June.
- Mock Exams in November and March of Year 11
- Coursework (NEA) throughout Year 10/11
(in some subjects)
- GCSE Exams at the end of Year 11

Aspiration • Compassion • Independence • Respect

Assessment and examination information

Curriculum booklets and Exam Board information










Link to the handout



BEECHEN CLIFF

Subject Exam board specifications and curriculum information 2025-27

Dear parents, in order to help you support your son in his studies in Year 10 and 11, please see the links below to the relevant exam board websites and subject curriculum booklets. These contain information about the content covered in each term, when assessments are planned to take place, the breakdown of the final exam structure and links to suggested revision materials.

Subject	Exam Board and Specification	Subject Curriculum Booklet		
Art	Eduqas GCSE Art & Design (Art, Craft and Design)		Art curriculum booklet	
Photography	Eduqas GCSE Art & Design (Photography)			
Business Studies	NCFE Level 1/2 Tech Award in Business & Enterprise		Business curriculum booklet	
Biology	AQA GCSE Biology 8461		Science curriculum booklet	
Chemistry	AQA GCSE Chemistry 8462			
Physics	AQA GCSE Physics 8463			

Aspiration • Compassion • Independence • Respect

Subject curriculum booklets and other information



BEECHEN
CLIFF

POPULAR PAGES ▼



MENU ≡

A photograph of two young boys in school uniforms (white shirts, blue ties, and blue and white striped aprons) looking down at something off-camera. They are in a classroom setting with a red bulletin board visible in the background.

SUBJECT CURRICULUM
INFORMATION (KEY STAGE
3/4)

Aspiration • Compassion • Independence • Respect

Subject curriculum booklets and other information

Termly breakdown
of what is being
covered in class and
assessments take
place

Year 10		
Exam Board: AQA		
Specification: Combined Science: Trilogy / Separate Science: Biology		
	Curriculum Foci Areas	Assessment
Term 1	<p>Infection & Response: <u>Communicable diseases</u></p> <ul style="list-style-type: none">• Pupils learn examples of various pathogens, the diseases they cause and how they are studied.• Pupils learn how the human immune system works to tackle infection. <p><u>Preventing and treating diseases</u></p> <ul style="list-style-type: none">• Pupils understand how vaccinations prevent secondary infections.• Pupils learn examples of drugs and how they are developed.• <i>Pupils learn how monoclonal antibodies are made and used (Separate Science only).</i>	Cell structure and Organisation
Term 2	<p>Bioenergetics: <u>Photosynthesis</u></p> <ul style="list-style-type: none">• Pupils learn how photosynthesis occurs and its importance.• Pupils understand how the rate of photosynthesis can be affected, and how this knowledge is used to optimise farming.	Infection & response

Aspiration • Compassion • Independence • Respect

Subject curriculum booklets and other information

Final Examination
structure and
suggested revision
resources

Hospitality & Catering Level 2			
Component	Weighting (%)	Content	Proposed Examination Date
Unit 1: Written exam: 1 hour 20 minutes	40%	Unit 1: The hospitality and catering industry Questions requiring short and extended answers, based around applied situations. Learners will be required to use stimulus material to respond to questions. 1.1 Hospitality and catering provision 1.2 How hospitality and catering providers operate 1.3 Health and safety in hospitality and catering 1.4 Food safety in hospitality and catering	May/June of Year 11
Unit 2: Controlled assessment: approximately 12 hours	60%	Unit 2: Hospitality and catering in action An assignment brief will be provided by WJEC which will include a scenario and several tasks available via the WJEC Secure Website. 2.1 The importance of nutrition 2.2 Menu planning 2.3 The skills and techniques of preparation, cooking and presentation of dishes 2.4 Evaluating cooking skills	Final hand in April of Year 11

Aspiration • Compassion • Independence • Respect

Preparing for assessments

Revision support in school:

Ongoing individual subject guidance / support.

Year 10

- Tutor based revision and guidance before Summer Exams.
- Revision skills session before EoY Exams.
- Summer support work.

Year 11

- Tutor based mentoring support and revision throughout.
- Targeted intervention sessions run from September.
- GCSE Revision Evening (for parents) before Mock Exams.
- After-school revision sessions in all subjects.
- Core subject revision sessions in tutor time.
- Revision programme during GCSE exams.

Aspiration • Compassion • Independence • Respect

Reports and parents evenings

- Progress Report 1 – End of Term 2
- Progress Report 2 - End of Term 4
- Parents Evening – 10th February (remote)
- Progress Report 3 - End of Term 6

Aspiration • Compassion • Independence • Respect

New format for reports

- Target grade
- Likely to Achieve (LtA) Grade
- Attitude to Learning (Excellent, Good, Inconsistent, Poor)
- Behaviour (Excellent, Good, Inconsistent, Poor)
- Optional subject comments - only if there is a concern or a student is working a long way before their target.

Aspiration • Compassion • Independence • Respect

Who to contact if you have questions

- Specific subject concern – contact your son's Teacher or Head of Faculty
- General concern – contact your son's Tutor or Head of Year
- Exam timetable queries – contact the Exams Officer via exams@beechencliff.mnsp.org.uk
- SEND or Exam access enquiries - contact Mrs J Blair, SENDCo

Aspiration • Compassion • Independence • Respect

Maths

Mr Burnby - Head of Maths



Aspiration • Compassion • Independence • Respect

How to help with studies: Maths

Course

Edexcel GCSE Mathematics (9-1) 1MA1

Exams

- **Paper 1** (1h30m) Non-Calculator - 80 Marks
- **Paper 2** (1h30m) Calculator - 80 Marks
- **Paper 3** (1h30m) Calculator - 80 Marks

Tiers

Higher Tier – Grades 9 to 4

Foundation Tier – Grades 5 to 1

Finalised in January of Y11, but ...

Higher Tier
10A1, 10A2, 10A3
Borderline
10B1
Foundation Tier
10B2, 10B3

Aspiration • Compassion • Independence • Respect

How to help with studies: Maths

Assessment Milestones

Year 10

Term 1
Term 2
Term 3
Term 4
Term 5
Term 6

*Preparation for
Key Stage 4
Assessment 1*

KS4 Assessment 1

*Preparation for
Key Stage 4
Assessment 2*

Year 10 Mock Exams

Year 11

Term 1
Term 2
Term 3
Term 4
Term 5
Term 6

*Preparation for
Key Stage 4
Assessment 3*

GCSE Mock Exams

Revision

GCSE Mock Exams

GCSE Exams

Aspiration • Compassion • Independence • Respect

How to help with studies: Maths

<https://met.midsomernorton.schoolspartnership.com>



What's covered in each Key Stage 4 assessment

What's in each test and what to practice

Video guides and online links for each concept

GCSE revision resources and past papers

NEW: [MET EBI Space](#) for independent study

Aspiration • Compassion • Independence • Respect

How to help with studies: Maths MET Reports

Green – Secure Knowledge

Red – Areas to Develop
Hyperlinked to MET Website

Grey – Not yet assessed

Aspiration • Comp

<Name>		10 October 2022		Beechen Cliff Mathematics	
Current MET: 67		Flight Path: M		What does this report mean?	
Target MET: 92		Target Flight Path: M+			
Number & Ratio		Algebra & Graphs		Geometry & Measure	
		12 MET skills secure above 72		Probability & Statistics	
71	Reverse percentage change using a multiplier (or otherwise)	Form the equation of a line through two points or through one point with a given gradient	Solve problems requiring multiple steps of SOH CAH TOA trigonometry and/or Pythagoras	Find the combined mean of two sets of data or calculate a new mean when extra data is added	
	Calculate compound interest using a percentage multiplier	Find the equation of a line by reading the gradient and y-intercept and use $y = mx + c$ form to identify parallel lines	Know the proofs of angles sums in triangles or quadrilaterals	Distinguish between interpolation and extrapolation in line of best fit estimates and comment on reliability	
	Multiplying or dividing mixed numbers	Find the gradient of a straight line graph and interpret it as a rate of change (eg velocity or acceleration)	Calculating the surface area of a cylinder (or half-cylinder or quadrant) giving answers approximately or in terms of π	Explain that correlation does not imply causation in a given context	
	Adding or subtracting mixed numbers	Reading roots or solutions from intersections of graphs of linear or non-linear functions	Convert between compound units and units of area and volume	Complete a tree diagram with independent probabilities and use it to calculate probabilities	
	Using percentage multipliers for change and understand the effect of multiplying by numbers above or below 1	Reading roots or solutions from intercepts of graphs of non-linear functions	Solve density-mass-volume or pressure-force-area problems	Define independent and calculate the probability of independent events both happening	
66	Writing a change as a percentage	Simplifying expressions by applying index laws more than once or to several terms	Solve problems requiring either multiple steps of Pythagoras or amending a diagram to locate a right angled triangle	Use data from a sample to estimate properties of the population and explain how bias might influence these estimates	
65	Calculate compound interest using repeated percentage change	Derive and solve simultaneous equations from word problems	Calculate lengths in similar 2D shapes	Define random sample and explain a method of selecting a random sample	
64	Calculate with numbers in standard form using a calculator	Solving linear simultaneous equations by elimination	Calculating the arc length or area of a sector	Compare distributions of data by referring to averages and spread	
63	Converting small numbers to and from standard form	Solving quadratic equations by factorising (unitary coefficient of x^2)	Use SOH CAH TOA trigonometry to calculate angles in right-angled triangles	Calculate the mean from a grouped frequency table	
		17 MET skills absent (or untested) below 63			

How to help with studies: Maths

Sparx Maths

Sparx Maths

Sparx Maths is an online Homework platform with 10,000s of bespoke written questions for KS3 & KS4.

Students are expected to provide written solutions to the questions in their Sparx book. Homework is set weekly.

Sparx also contains lots of independent practise questions.

Aspiration • Compassion • Independence • Respect

How to help with studies: Maths

Scientific Calculator

Casio FX-83GT CW (or **FX-911 CW** for A-Level Functions)

Aurora AX595-TV is a good cheaper alternative.

Black Pen

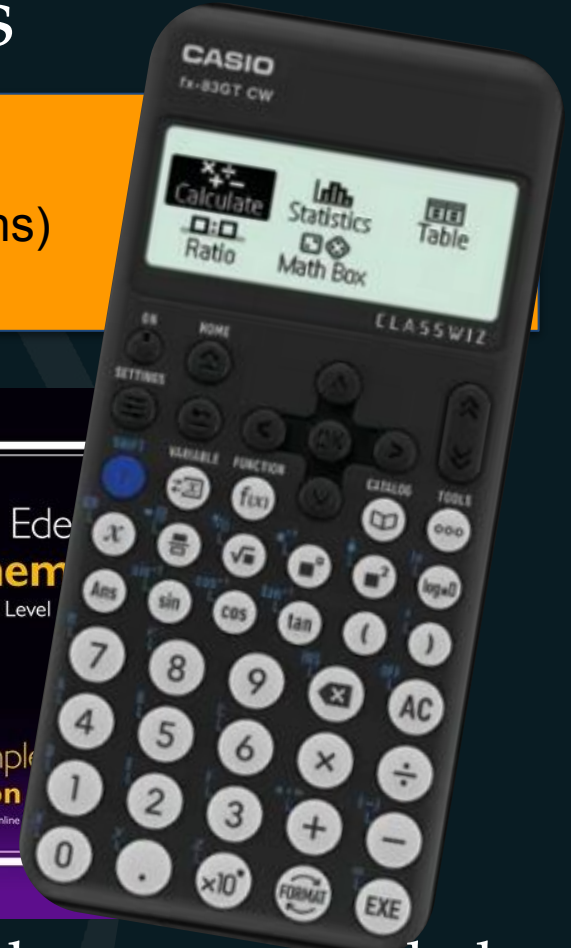
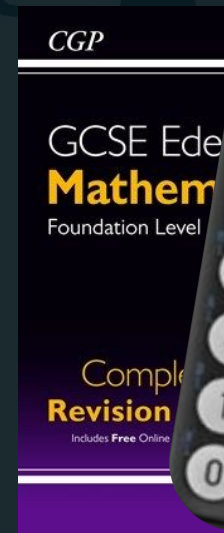
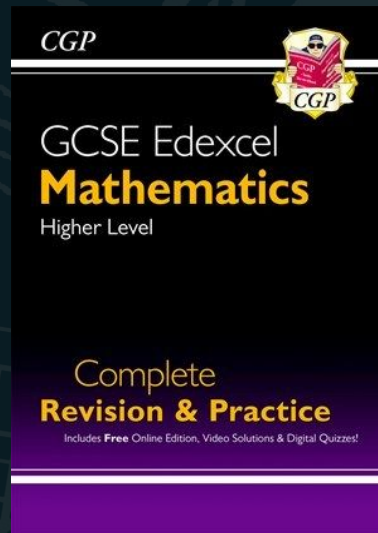
HB Pencil

Eraser

Ruler (cm & mm)

Protractor

Compass



CGP Complete Revision and Practice books recommended

Aspiration • Compassion • Independence • Respect

English

Mrs S O'Higgins

Head of English



Aspiration • Compassion • Independence • Respect

The course



AQA English Language and English Literature

TWO GCSE qualifications- each with **TWO** separate examinations =
FOUR final summer exams.

Syllabus information www.AQA.org.uk

08700 English Language

08702 English Literature

Aspiration • Compassion • Independence • Respect

The course



Setting structure

Set 1

Mixed ability x 4 classes

Support group

We will set aspirational targets for your son which we think are challenging but achievable.

Set 1: 8/9

Mixed ability – grades 4-9

Support group- grades 4-6

Aspiration • Compassion • Independence • Respect

How to help with studies: English



English Language Assessment Two final examinations

Paper 1

Explorations in Creative Reading and Writing (Fiction)

Paper 2

Writers' Viewpoints and Perspectives (Non-fiction)

The Oral Speaking and Listening assessment is separately endorsed – completed during the course.

Aspiration • Compassion • Independence • Respect

How to help with studies: English



English Literature Assessment

Two Final examinations - Closed Text*

Paper 1- Shakespeare and 19th Century Fiction

- Both are extract based essay questions with a need to refer to the text as a whole

Paper 2- Modern texts and Poetry

- One essay question on Modern text
- One Anthology poem question
- One unseen poetry section

Aspiration • Compassion • Independence • Respect

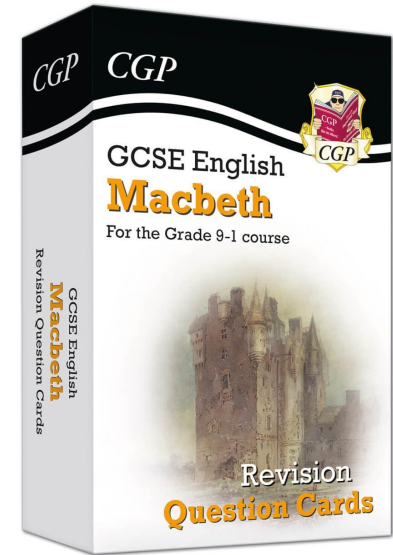
How to help with studies: English



Closed Text*

This means that pupils do not have their texts with them in the examination.

Pupils must know the texts well and learn quotations 'by heart'



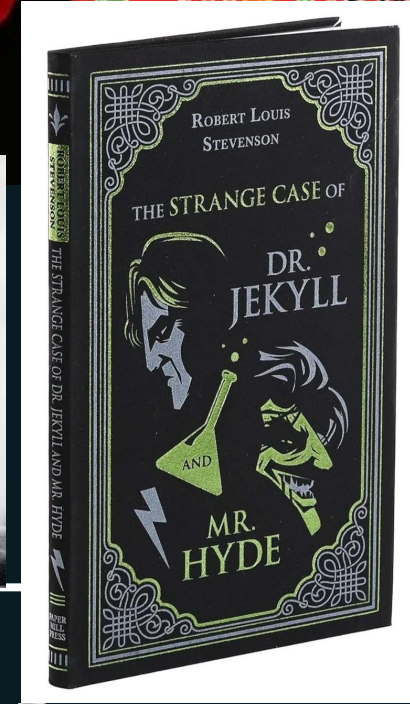
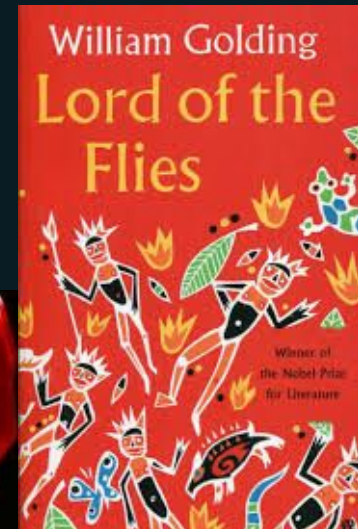
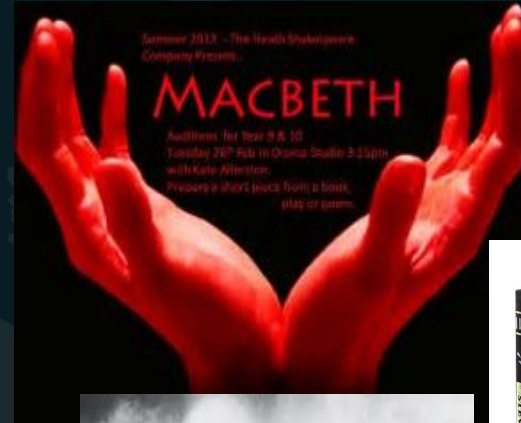
Aspiration • Compassion • Independence • Respect

How to help with studies: English

Although not obligatory, boys do benefit from having their own copies of the texts.

They are most useful if they are the same edition that the teacher/class is using. We advise waiting.

Boys will also benefit greatly from having their own highlighters and fineliners for annotation work.



Aspiration • Compassion • Independence • Respect

How to help with studies: English



In Year 10

Students will practice the skills for Language Paper 1.
(Fiction)

In Year 11

Students will practice the skills for Language Paper 2.
(Non-fiction + comparison)

Aspiration • Compassion • Independence • Respect

How to help with studies: English



In Year 10

Students will study at least two of the set texts (Shakespeare and 19th Century text) and explore a range of other texts, cover the poetry anthology and complete their speaking and listening assessment at the end of the year.

In Year 11

Students will study one further set text (Modern text) and revise those studied in Year 10.

They will practise the skills needed for both examinations.

Aspiration • Compassion • Independence • Respect

How to help with studies: English



Homework and preparation tasks may include:

Cornell notes on a topic

Making flashcards for revision

Reading and annotating or making notes

Drafting or rewriting essays

Memorising quotations-flashcards

Paraphrasing or summarising texts

Arguing for or against a topic

Discussing and re-organising ideas

Watching a film of a play or novel

Seneca Learning – app

Listening to a discussion on a topic or text

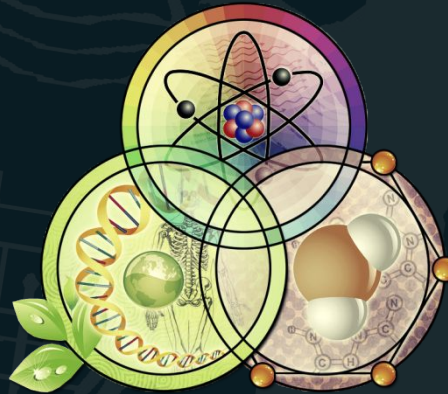
Wider reading: Non-fiction sources and wider literature

Further revision materials and guidance will be provided via Google Classroom

Aspiration • Compassion • Independence • Respect

Science

Ms R Bala - Head of Science



Aspiration • Compassion • Independence • Respect

How to help with studies: Science

All content is assessed at the end of year 11.
No controlled assessments or coursework.

Required practicals are carried out in class.
Practical skills are assessed through the final examinations.

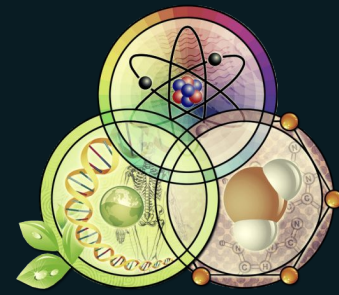
Significant emphasis is placed on maths skills (Biology: 10%)
(Chemistry: 20%)
(Physics: 30%)

In Physics, students need to be confident in using equations, but they are likely to be given a full equation sheet.

Terminal exams need a consistent approach from pupils.

Aspiration • Compassion • Independence • Respect

How to help with studies: Science



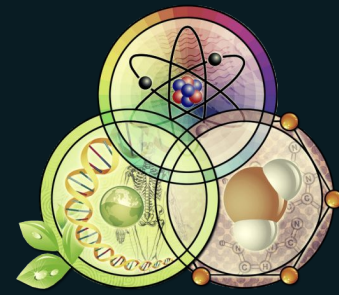
Routes through Science

Combined Science - Trilogy (8464)
(Classes C1 - C4)

- AQA Combined Science – Trilogy
- Pupils still study Biology, Chemistry and Physics
- 2 x 1hr15 exams **per subject** at the end of year 11.
- Less content to learn and shorter exams. More time available in year 11 to revise.
- Pupils will get two GCSE grades for Combined Science.
- E.g. 8,8 or 7,7 or 7,6 (maximum one grade difference).
- Taught by two Science teachers in blocks to cover all three Sciences.

Aspiration • Compassion • Independence • Respect

How to help with studies: Science

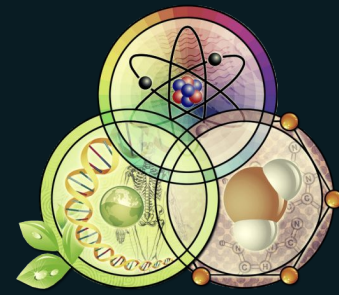


Separate Sciences (Classes: S1 & S2)

- AQA Biology (8461), Chemistry (8462) and Physics (8463)
- 2 x 1hr45 exams **per subject** at the end of year 11.
- This will result in a separate grade for each, e.g. Biology: 8, Chemistry: 7, Physics: 9.
- Separate Biology, Chemistry & Physics lessons each week, each with a subject specialist.
- Good preparation for A-Level Science.

Aspiration • Compassion • Independence • Respect

How to help with studies: Science



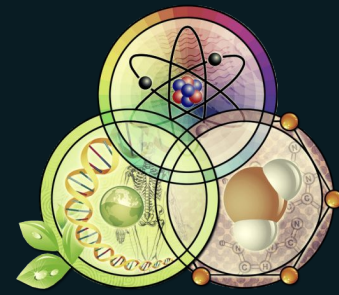
The route your son is currently on may change.

Students may be moved from Separate Sciences to Combined Science.

Setting arrangements are continuously monitored, particularly following key assessments.

Aspiration • Compassion • Independence • Respect

How to help with studies: Science

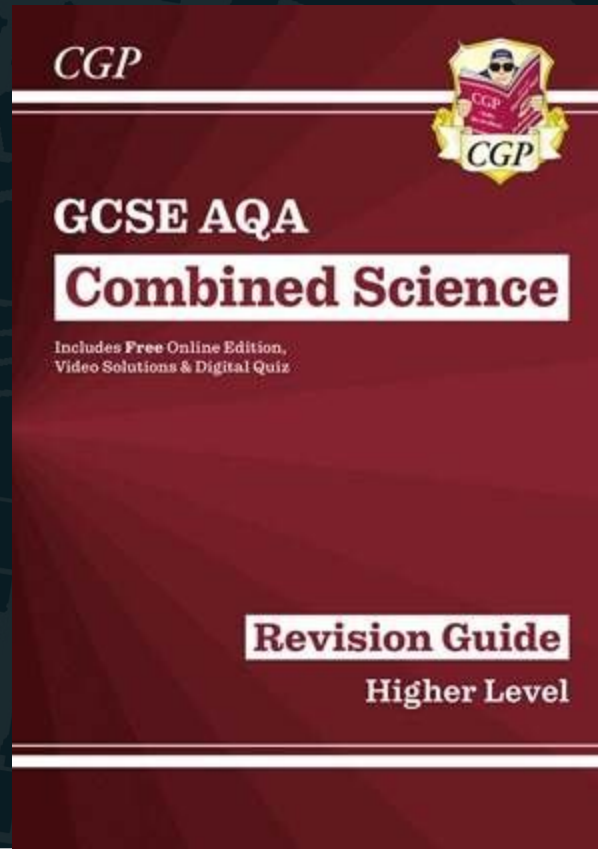


Resources:

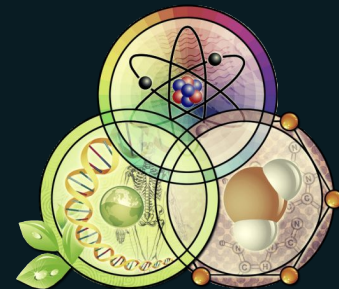
Revision guides

Cognito science

BBC Bitesize



Aspiration • Compassion • Independence • Respect



How to help with studies: Science

Assessments:

Termly internal assessments, end of year 10 mock exams.

Look at the learning checklists (on Google classroom) to see what will be tested.

Use revision guide/BBC Bitesize.

Complete all online homework tasks.

Make glossaries and learn key terms.

Aspiration • Compassion • Independence • Respect



BEECHEN
CLIFF

FUTURE
HORIZONS

Year 10

Careers Information

Mr A Seal

Aspiration • Compassion • Independence • Respect



BEECHEN
CLIFF

FUTURE
HORIZONS

Our Aim:

To provide all students with inspirational and informative experiences so that they leave Beechen Cliff equipped with the skills and the drive to succeed in their chosen path.

Aspiration • Compassion • Independence • Respect

Year 10 Developing self-awareness

- Importance of career management
- Making informed decisions
- Increasing self-awareness
- Awareness of opportunities
- Work experience
- How recruitment and selection processes work and how to succeed

Aspiration • Compassion • Independence • Respect



BEECHEN
CLIFF

FUTURE
HORIZONS

VERY safe hands - The Gatsby Benchmarks

Bench mark	Explanation	2024/2025
1	A stable careers programme	100%
2	Learning from career and labour market information	100%
3	Addressing the needs of each pupil	100%
4	Linking curriculum learning to careers	100%
5	Encounters with employers and employees	100%
6	Experiences of workplaces	100%
7	Encounters with further and higher education	100%
8	Personal guidance	100%

Aspiration • Compassion • Independence • Respect

Year 10 Careers Overview

PSHE & TUTOR PROGRAMME

Supports students in:

Self development

Careers exploration

Careers management

CVs

Using Unifrog to support

CAREERS & NATIONAL APPRENTICESHIP WEEKS

Visits, speakers and a variety of activities

IGNITE DAY 27th Nov 2025

Preparation for Work Experience

Build confidence in interviewing, communication and presentation skills

Help students reflect on their strengths, skills and goals

CAREERS APPOINTMENTS

Year 10 students will have a 1:1 Careers meeting in the Summer Term

WORK EXPERIENCE

More information to be provided shortly but

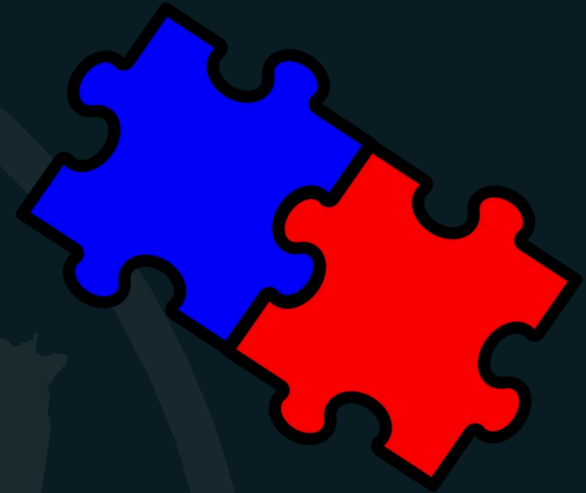
SAVE THE DATE!

13th - 17th July 2026

Aspiration • Compassion • Independence • Respect

Who can help?

- Parents/Carers
- Subject Teachers
- Year 10 Tutor
- Mr Macdonald - Head of Year 10
- Mrs Rogers - Key Stage 4 Pastoral Manager
- Mrs Pascoe - Head of Futures



careers@beechencliff.mnsp.org.uk
www.beechencliff.org.uk/careers-and-future-horizons

Aspiration • Compassion • Independence • Respect



BEECHEN
CLIFF

**FUTURE
HORIZONS**

We need your support to help us bring the world of work to life for our students - your insight, experience, and enthusiasm could make all the difference:

- **Host a Careers Breakfast** – talk informally about your career path and what a typical day looks like.
- **Deliver a Q&A or Workshop** – share your professional journey and inspire our students with the range of opportunities in your field.
- **Offer Work Experience Placements** – give a student the invaluable experience of seeing your workplace in action.
- **Provide Mentoring or Mock Interview Practice** – help prepare our boys for the next steps in their education or working lives.

Please fill in this form to help: [Support our Careers Service](#)

Aspiration • Compassion • Independence • Respect

Thank you!

All slides will be on the website tomorrow

Contact - headteacher@beechencliff.mnsp.org.uk

Follow us on X - @BeechenCliff

Follow us on instagram - @beechencliffbath

Get involved with the PTA! - info@beechenpta.org

Aspiration • Compassion • Independence • Respect