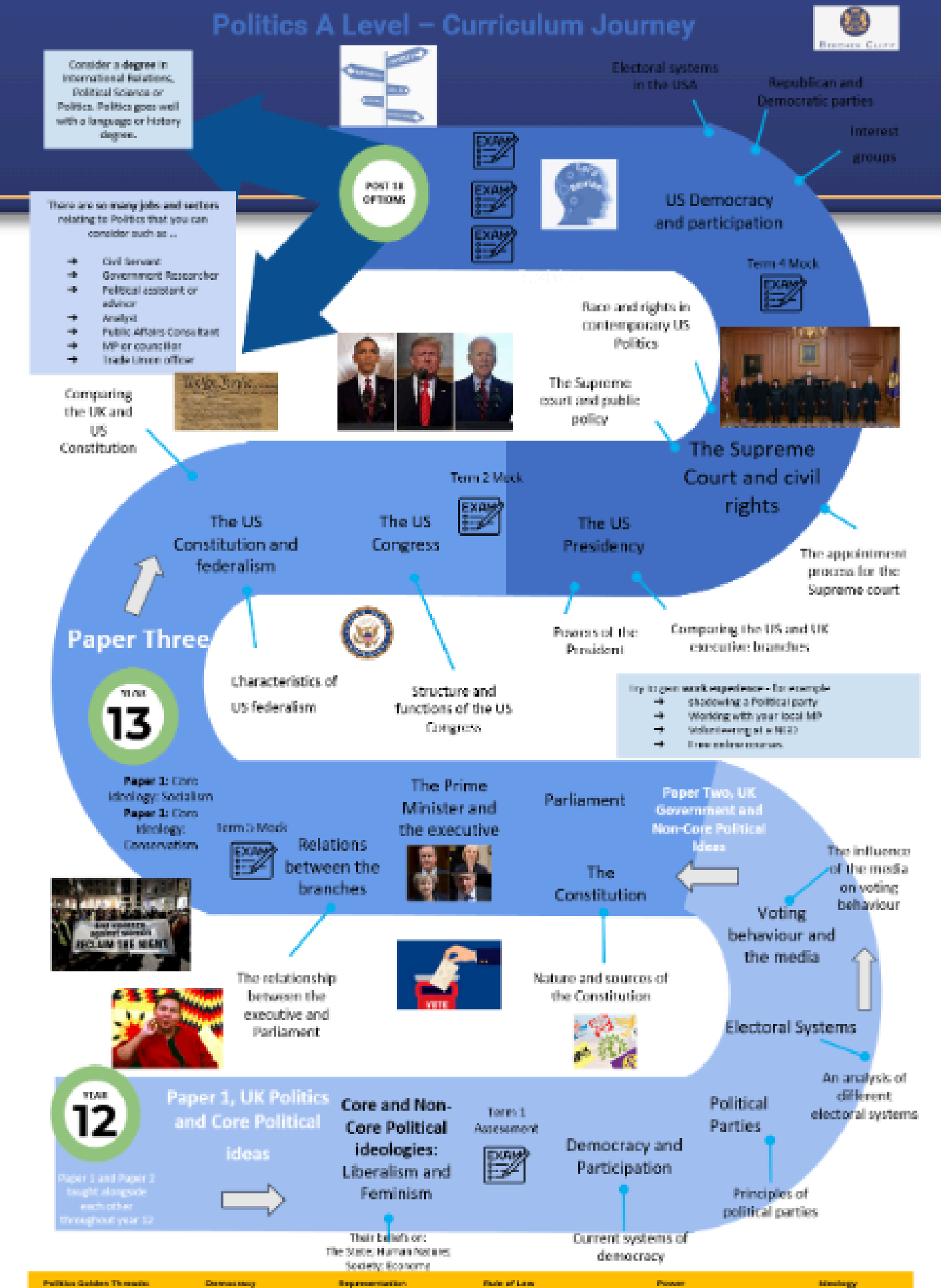




Studying Politics at Beechen Cliff

- ❑ Paper 1 - UK Politics and Core Political Ideas (Liberalism and Conservatism)
- ❑ Paper 2 - UK Government and Non Core Political Idea (Feminism)
- ❑ Paper 3 - US Government and Politics





Headline results:

2025:

38% A*-A (28% national)

100% A*-C (82% national)

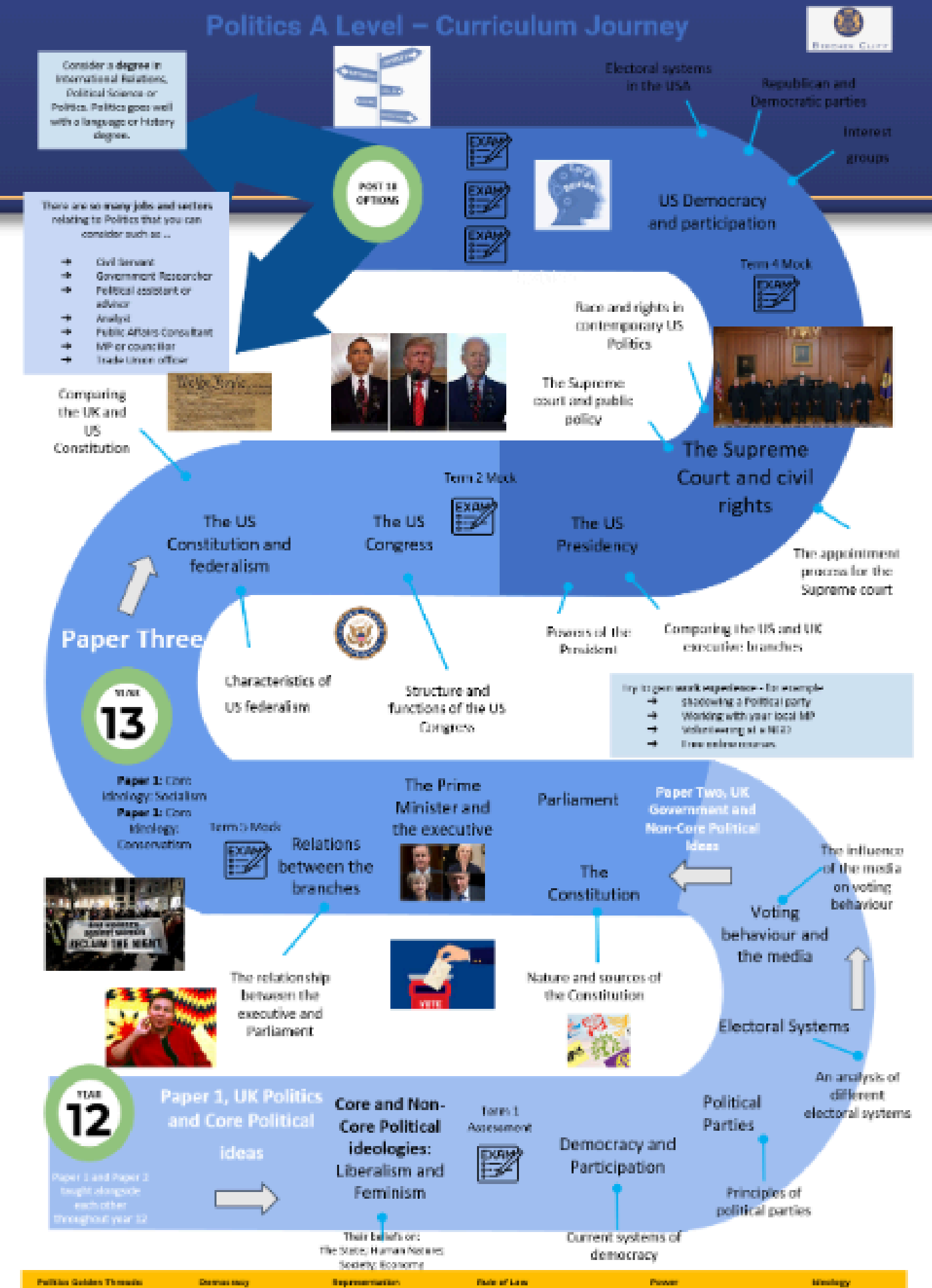
2024:

33% A*-A (28% national)

83% A*-C (79% national)

2023:

87% A*-C (80% national)





Blackrod

- A)** A senior official who is responsible for the day-to-day management of the House of Lords.
- B)** The Speaker's second in command.
- C)** The man who removes the pigeons roosting in the roof of the House of Commons.



Chief Whip

A) Keir Starmer's personal assistant.

B) The person responsible for maintaining discipline in their political party in the House of Commons.

C) An old fashioned term used to refer to the head of the Opposition.



Bisque

A) An old fashioned term for the King's Speech.

B) When MPs get permission to miss important votes or debates.

C) The traditional soup they serve in the House of Commons canteen.



Filibustering

- A) When MPs secretly try to get members of their family voted into office.
- B) When an MP brings their pet into parliament.
- C) When MPs try their hardest to waffle and make irrelevant points so that they can delay a bill.**



Gerrymandering

- A) The manipulation of the boundaries of an electoral constituency to favour one party.
- B) When US Senators stand at the door and get people to sign their petitions.
- C) Heckling MPs through the glass screens in the public gallery of the House of Commons.



Why Donald Trump would make a good Politics student...



Sorry losers and haters, but my I.Q. is one of the highest -and you all know it! Please don't feel so stupid or insecure, it's not your fault

Reply Retweet Favorite More

1,105
RETWEETS

563
FAVORITES



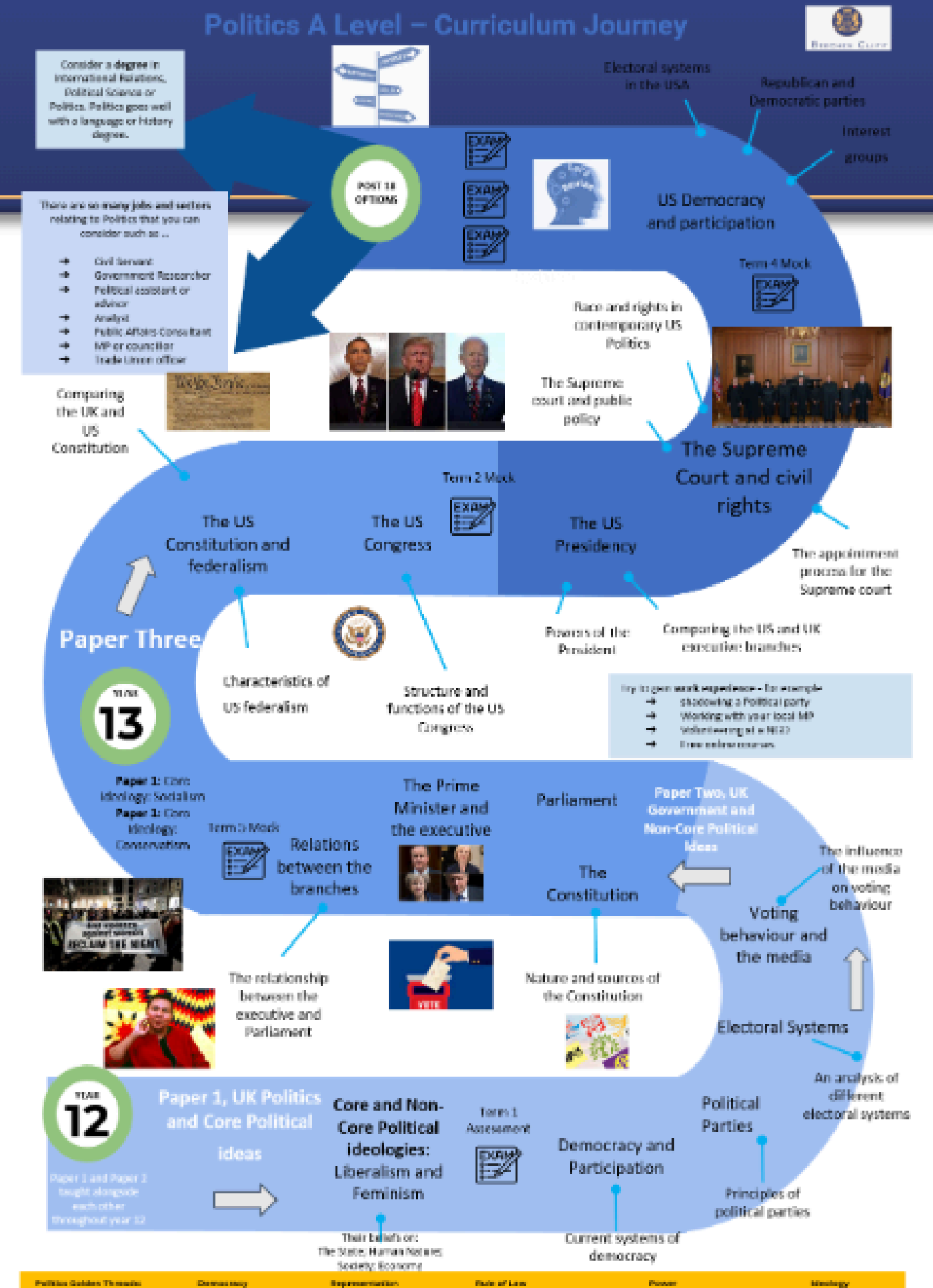
6:37 PM - 8 May 13



BEECHEN CLIFF

What do you need to be to be an excellent politician at Beechen Cliff?

- ☐ Passionate
- ☐ Curious
- ☐ Organised
- ☐ Dedicated
- ☐ Disciplined
- ☐ Up to date with current affairs!



Aspiration

Compassion

Independence

Respect



EITHER

2 (a) Evaluate the extent to which the government has successfully reduced the gender pay gap.

You must consider...

OR

OR

(b) Evaluate the extent to which the government has successfully reduced the gender pay gap.

You must...

Answer ONE question from EITHER

EITHER

1 (a) Examine the ways in which the US and the UK Constitutions are similar.

OR

(b) Examine the factors that create a two-party dominance both in the US and in the UK.

(12)

(Total for Question 1 = 12 marks)

Index

SECTION A: POLITICAL PARTICIPATION

Answer ONE question from EITHER Question 1(a) on page X OR Question 1(b) on page X and then answer ONE question from EITHER Question 2(a) OR Question 2(b) on page X.

EITHER

'In 2014 by The University of London Crisis of Democracy?' The report was issued.

... appear to be facing something of a crisis. Levels of trust in government and in the media have fallen more than they were little more than a decade ago, most noticeably at the 2001 general election. The report also notes that the political institutions since 1997, designed in part to make the system more robust, have had little impact.

... the political system. The report also notes that the political institutions since 1997, designed in part to make the system more robust, have had little impact.

... which suggests the need for a long-term solution. The report also notes that the political institutions since 1997, designed in part to make the system more robust, have had little impact.

... rely lie in the hands of the political system. The report also notes that the political institutions since 1997, designed in part to make the system more robust, have had little impact.

... by, John Curtice, and Ben Seyd - The Crisis of Democracy (2014) (https://www.ukip.org/what-we-do/publications/112.pdf)

... y is in crisis.

... balanced way

... g both arising from the source and beyond the source to help you to evaluate.

(30)

(Total for Question 5 = 24 marks)

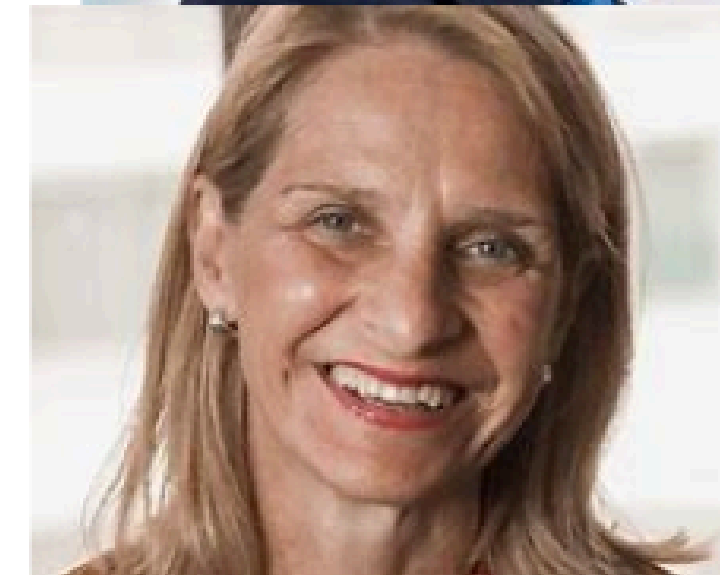
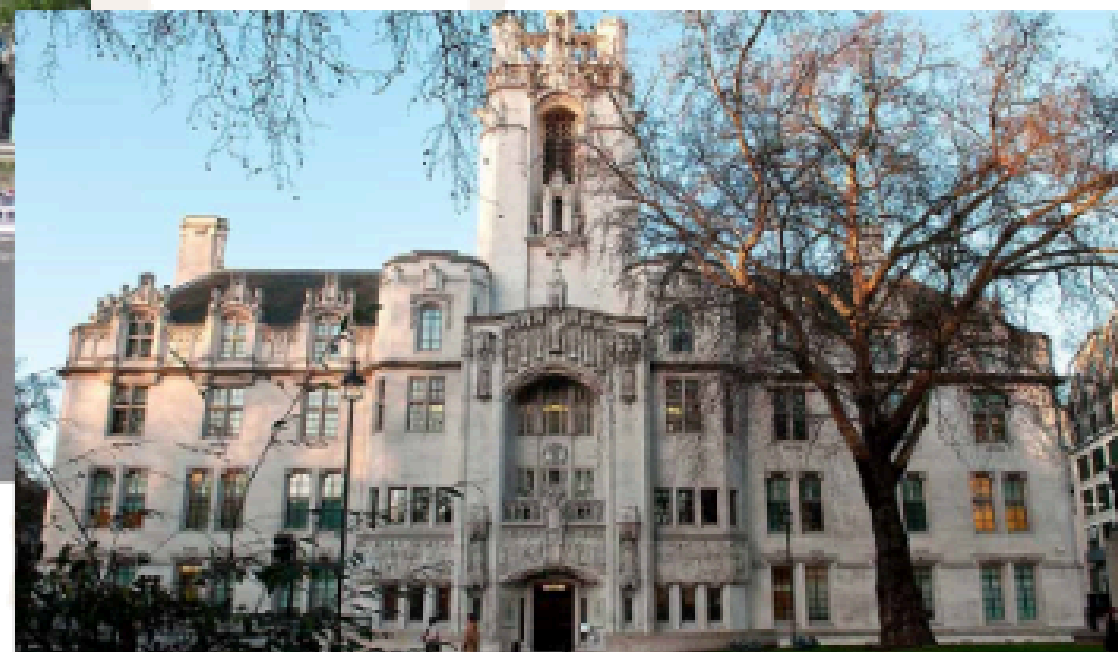
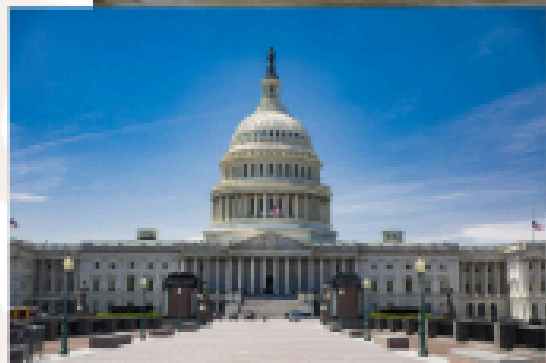
(24)

- consider...
- use a balance of knowledge from the source and beyond the source to help you to evaluate.



BEECHEN CLIFF

Super-Curricular Opportunities



Aspiration

Compassion

Independence

Respect



Studying Politics at Beechen Cliff

- ❑ Paper 1 - UK Politics and Core Political Ideas (Liberalism and Conservatism)
- ❑ Paper 2 - UK Government and Non Core Political Idea (Feminism)
- ❑ Paper 3 - US Government and Politics

